

What do EOSC Rules of participation* imply **?

* and FAIR principles

** as Research Infrastructures policies

Ari Asmi, PhD, eMBA
(now director @ RDA Association)

A pair of hands, belonging to a person wearing a white shirt, are gently cupping a small, realistic model of the Earth. The globe shows continents in green and yellow and oceans in blue. The hands are positioned in the center of the frame, with the fingers slightly curled around the globe. Overlaid on the upper part of the image is a semi-transparent grey rectangular box containing the text 'FAIR PRINCIPLES' in white, bold, sans-serif capital letters.

FAIR PRINCIPLES

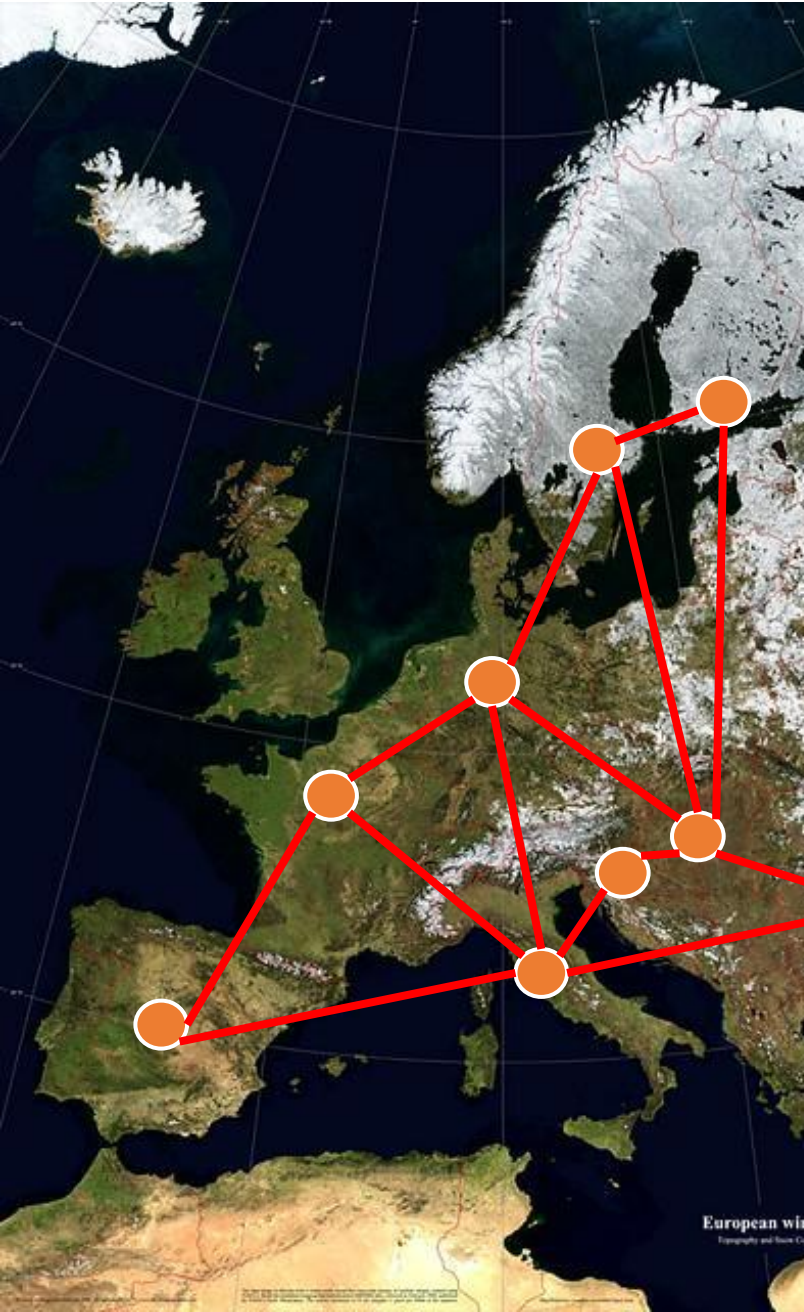
A photograph of a wooden gate in a green field. The gate is made of dark wood and has a metal latch. To the left of the gate, there are two small blue and white circular signs on a wooden post. In the background, there is a green field with several brown cows. The field is surrounded by trees and hills in the distance.

EOSC RULES OF PARTICIPATION (RoP)





EUROPEAN (DISTRIBUTED) RESEARCH INFRASTRUCTURES





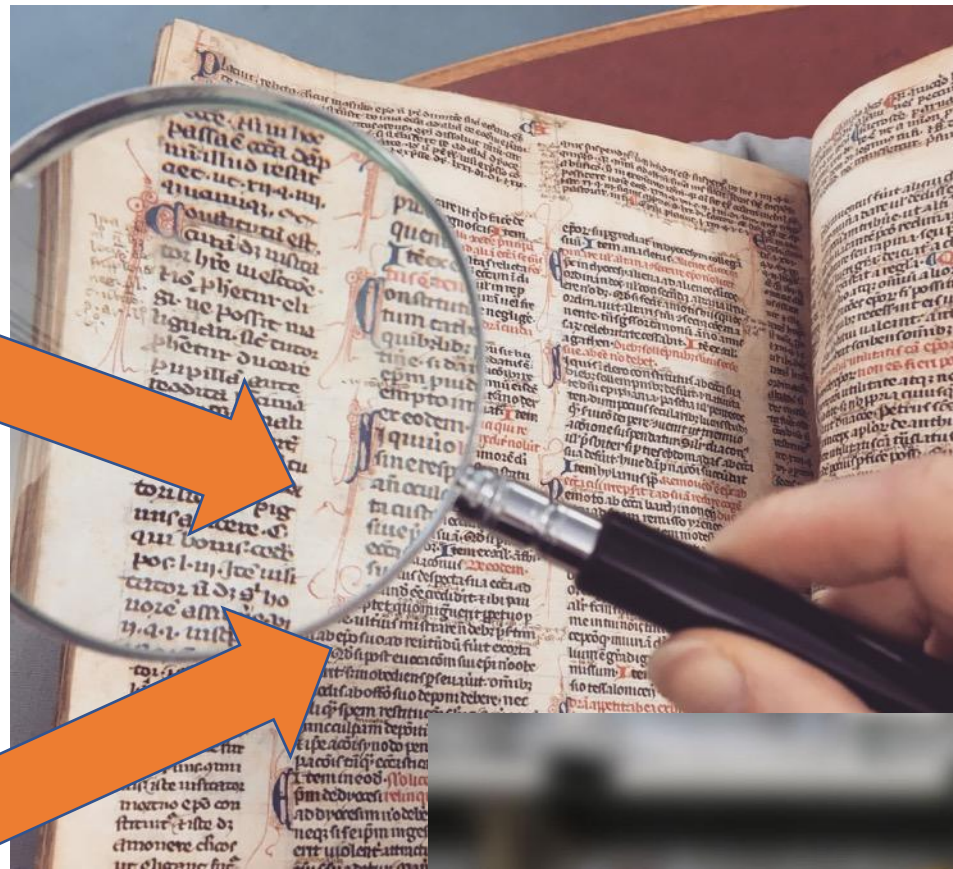
Policies?

FUNDERS





EOSC RULES OF PARTICIPATION
(RoP)



FAIR PRINCIPLES



Core policy
statements

Org. specific
parts

Each production dataset has a globally unique persistent identifier assigned to it.

Each production dataset type has a definition and scope, including a defined resolution (temporal, spatial and content).

Each production dataset is accompanied or linked with detailed, rich, and documented metadata

Metadata primarily uses controlled vocabularies. These are available and fulfil the FAIR principles

The services open to EOSC are intended to be available to all users, regardless of their origin

RI has a sustained solution for provision of globally persistent identifiers for digital objects

Globally unique PIDs are sustainably and automatically resolvable to relevant (meta)data

Each production dataset type has documented quality indicators, and the dataset metadata includes this information

All metadata records related to production datasets have a globally unique PID

Metadata records for (production) datasets are registered or indexed in a searchable and openly available repository

Metadata use a formal, accessible, language for knowledge representation

Metadata includes a clear qualified reference to the data they describe

Metadata include a suitable license, and they are documented accordingly.

RI maintains an information repository which contains information on origin and all transformations done to each dataset, with relevant PID references.

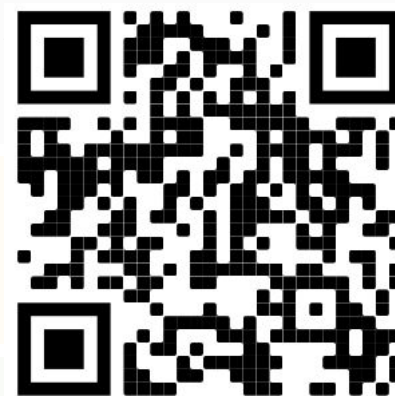
Services provided to users must be documented with relevant and accurate metadata enabling their use, and evaluation of their quality.

Open (non-restricted) access is the default access mode for production datasets, and decisions to otherwise need to be justified accordingly

RI must comply to relevant regulations and scientific practices related to authorship and privacy in their metadata fields

Production datasets have a suitable license, and this documentation is included in the linked metadata.

Metadata and data technical access follow community accepted protocols



Policy documents and publicly available and linkable from the metadata

Metadata should include a way to user to evaluate the FAIRness of the datasets or services

The metadata for services and data must include a reference to the Terms of Use and Licenses applicable

Services using datasets maintain the link to data origin in their metadata or other provided auxiliary data

For datasets requiring authorization procedures, the process is documented and transparently available

Infrastructure service design must include considerations to limit liability for the RI

PIDs will resolve to relevant metadata even after the datasets are no longer available.

Dataset and service metadata contains necessary information to evaluate the provenance and transformations done to the original dataset(s). Earlier versions of the processed datasets are directly indicated via PIDs.

RI develops and upkeeps a process for data deletion or reduction, including relevant changes to metadata if this is necessary.

31 recommendations of policy statements

Metadata policies

PID policies

Service Sustainability

Access policies

Etc.

Current situation...



Not seen important



Not written

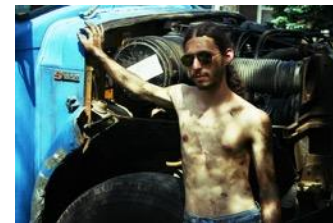


Not decided

Not approved

Not implemented

Not findable



(large, but
unknown)
amount of
organisational
debt



Some conclusions (?)

- EOSC RoP and FAIR principles imply several organisational decisions
- There is no clear consensus what these even are
- ENVRI Policy FM tries to map some of them
- Many organisations (here RIs) are not even aware of what they need – let alone deciding and documenting them
- What is decided is not usually visible to users (or anyone)
- This is not helped by the diverse organisational structures of the European RIs
- There is significant (but unknown) amount of undocumented organisational debt related to EOSC



Happy families are all alike;
**every unhappy family is unhappy in
its own way**

We don't know yet what the "happy" in EOSC even means

